

## Washbasin faucet V-2 CROSS (BR)

Product information



### Description

Refined design, which has been in-demand for centuries, is coupled to the newest water saving and regulation innovations.

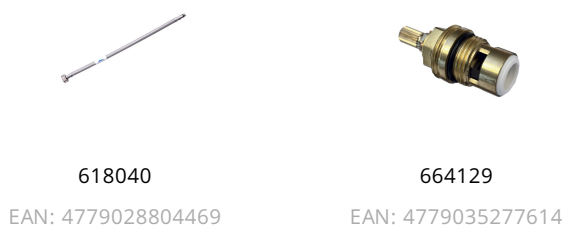
- 5-years warranty
- After assembly all our faucets are being 100% tested
- Faucets aerators with a silicone surface prevents the formation of the lime scale and provides a steady stream of water over a long period of time.
- Aerator Eco Neoperl ensures long-lasting, quiet and flawless performance of the faucet.
- High-quality brass with lowered content of harmful impurities is one of the most important component materials.
- Faucets with the ANTI-NOISE system work silently and do not cause discomfort.
- Air and water mixing technology ensures exceptional economy.
- Save water and energy resources with our RubiSave cartridge. Having bought a faucet with the RubiSave cartridge, you can not only regulate the water consumption, but also the temperature and so reduce the consumption of water up to two time
- Easy fix – Rubineta faucets are installed quickly and easily.
- Ceramic valve FLUHS with flow controller and noise limiter is produced in Germany. Rotation angel - 270°. High quality valve ensures stable, long lasting, silent and reliable functioning.
- Aerator ANTILIME – we use Neoperl® Cascade SLC aerators with a silicone surface, which prevents the formation of the lime scale and provides a steady stream of water over a long period of time. The aerator with the ANTILIME function is easy to maintain,
- Faucet is complemented with 40 cm connection hoses.



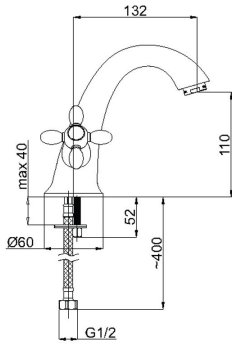
### Specification

<b>Code</b>	V20096
<b>Intended use</b>	Washbasin faucet
<b>EAN</b>	4779035271964
<b>Warranty</b>	5
<b>Series</b>	Venezia
<b>Segment</b>	Premium
<b>Connection</b>	1/2
<b>Finish</b>	Galvanical, lacquered (bronze color)
<b>Debit l/m</b>	12.3

### Components



## Scheme



## Package



<b>Package quantity</b>	12
<b>Weight Brutto (kg)</b>	1.6641
<b>Weight Netto (kg)</b>	1.38843
<b>1 package length (m)</b>	0.127
<b>1 packaging depth (m)</b>	0.231
<b>The primary package width (m)</b>	0.17
<b>2 package weight (kg)</b>	0.8
<b>2 packaging capacity</b>	0.06912
<b>2 Packaging depth (m)</b>	0.4
<b>2 packaging length (m)</b>	0.48
<b>2 packaging width (m)</b>	0.36